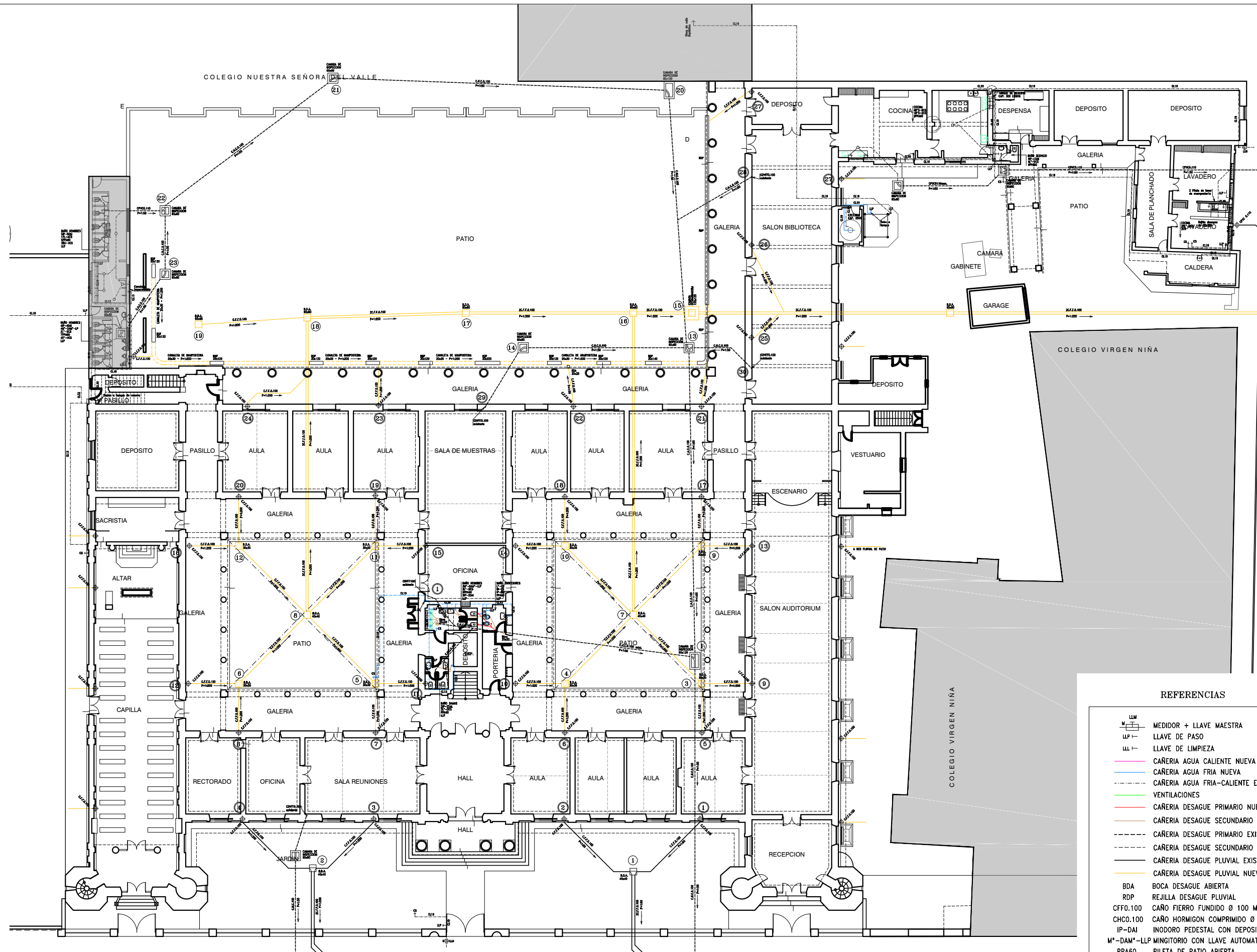
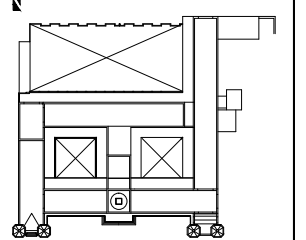


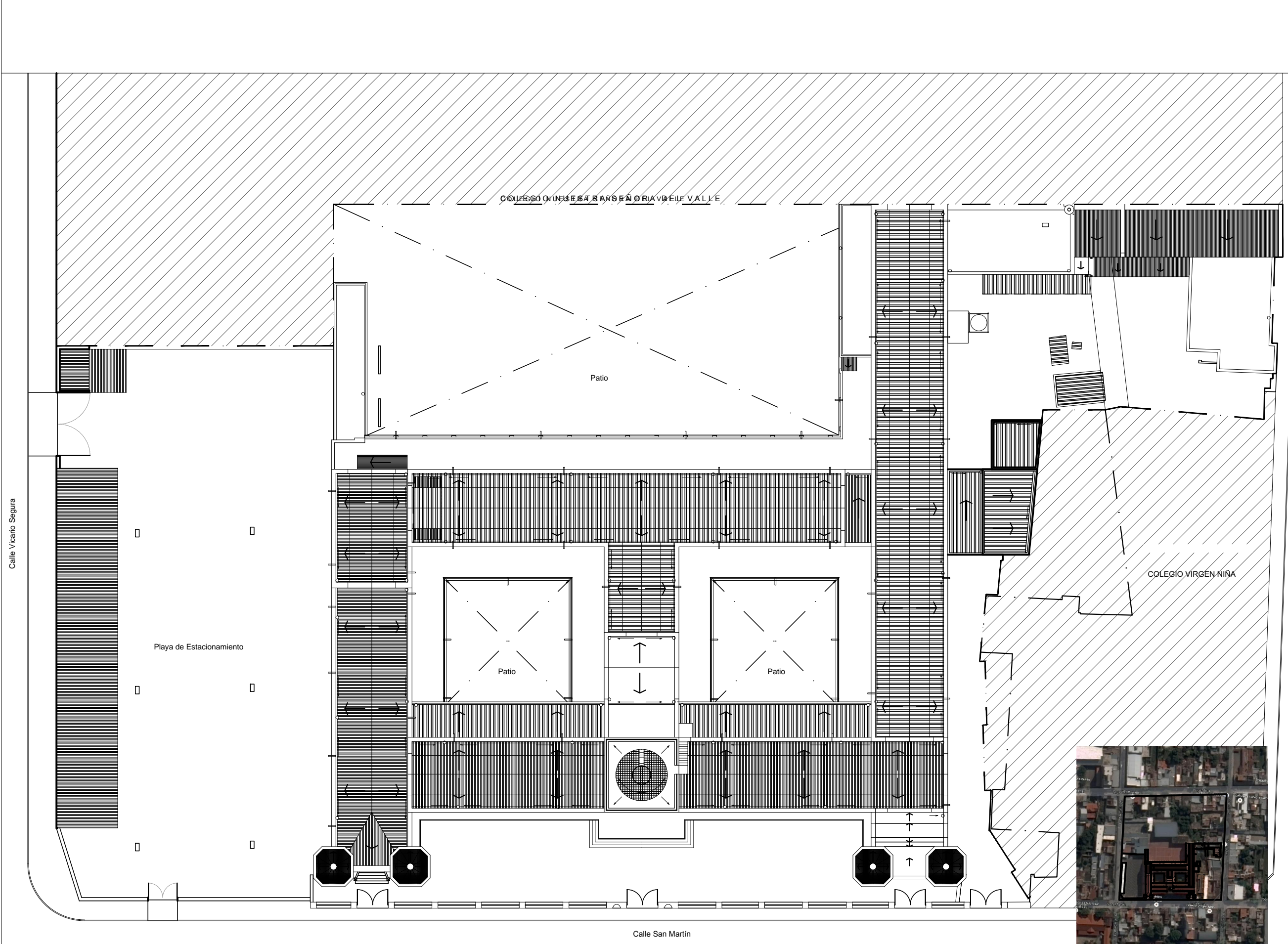
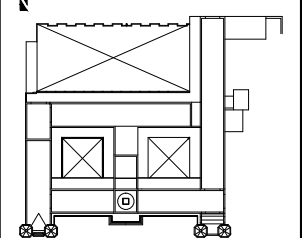
**ELECTRICIDAD - PLANTA ALTA**



CALLE SAN MARTIN  
**INSTALACION DE AGUA, DESAGUE CLOACAL Y PLUVIAL - PLANTA BAJA**

**REFERENCIAS**

	MEDIDOR + LLAVE MAESTRA
	LLAVE DE PASO
	LLAVE DE LIMPIEZA
	CAÑERIA AGUA CALIENTE NUEVA
	CAÑERIA AGUA FRIA NUEVA
	CAÑERIA AGUA FRIA-CALIENTE EXISTENTE
	VENTILACIONES
	CAÑERIA DESAGUE PRIMARIO NUEVA
	CAÑERIA DESAGUE SECUNDARIO NUEVA
	CAÑERIA DESAGUE PRIMARIO EXISTENTE
	CAÑERIA DESAGUE SECUNDARIO EXISTENTE
	CAÑERIA DESAGUE PLUVIAL EXISTENTE
	CAÑERIA DESAGUE PLUVIAL NUEVO
	BDA BOCA DESAGUE ABIERTA
	RDP REJILLA DESAGUE PLUVIAL
	CFFO.100 CAÑO FIERRO FUNDIDO Ø 100 MM.
	CHCO.100 CAÑO HORMIGON COMPRIMIDO Ø 100 MM.
	IP-DAI INODORO PEDESTAL CON DEPOSITO
	M*-DAM*-LLP MINGITORIO CON LLAVE AUTOMATICA
	PPA60 PILETA DE PATIO ABIERTA
	B*R BACHA REDONDA
	LLP LLAVE DE PASO
	CS CANILLA SIMPLE
	D* DUCHA
	L* LAVATORIO
	Bt BIDE



**PLANTA GENERAL DEL CONJUNTO**  
Esc:1:100

**UBICACION**

Calle San Martín

Calle Vicario Segura

Calle 9 de Julio

COLEGIO NUESTRA SEÑORA DEL VALLE

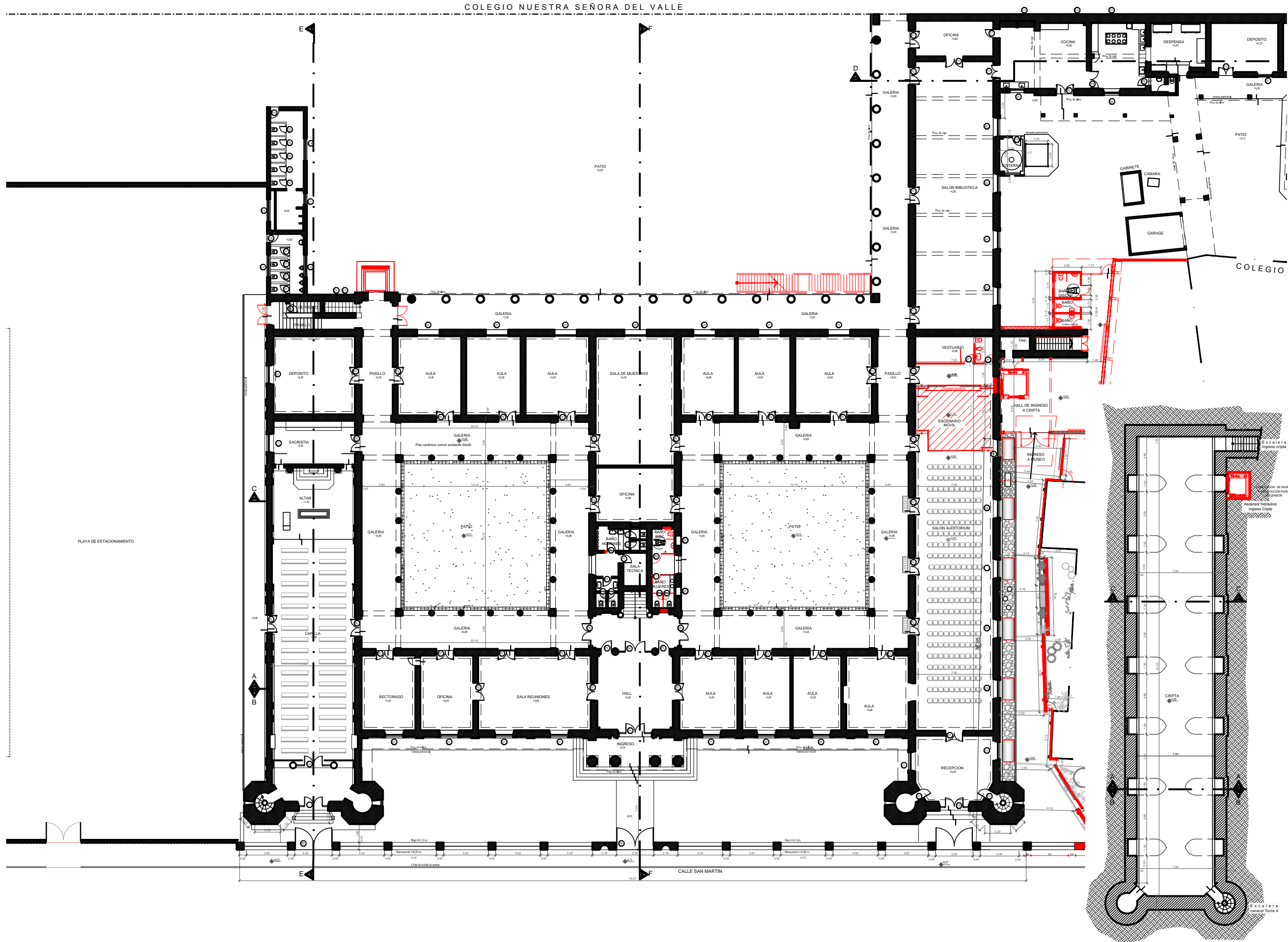
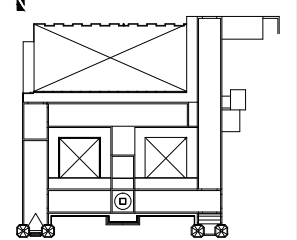
Patio

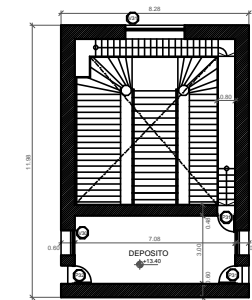
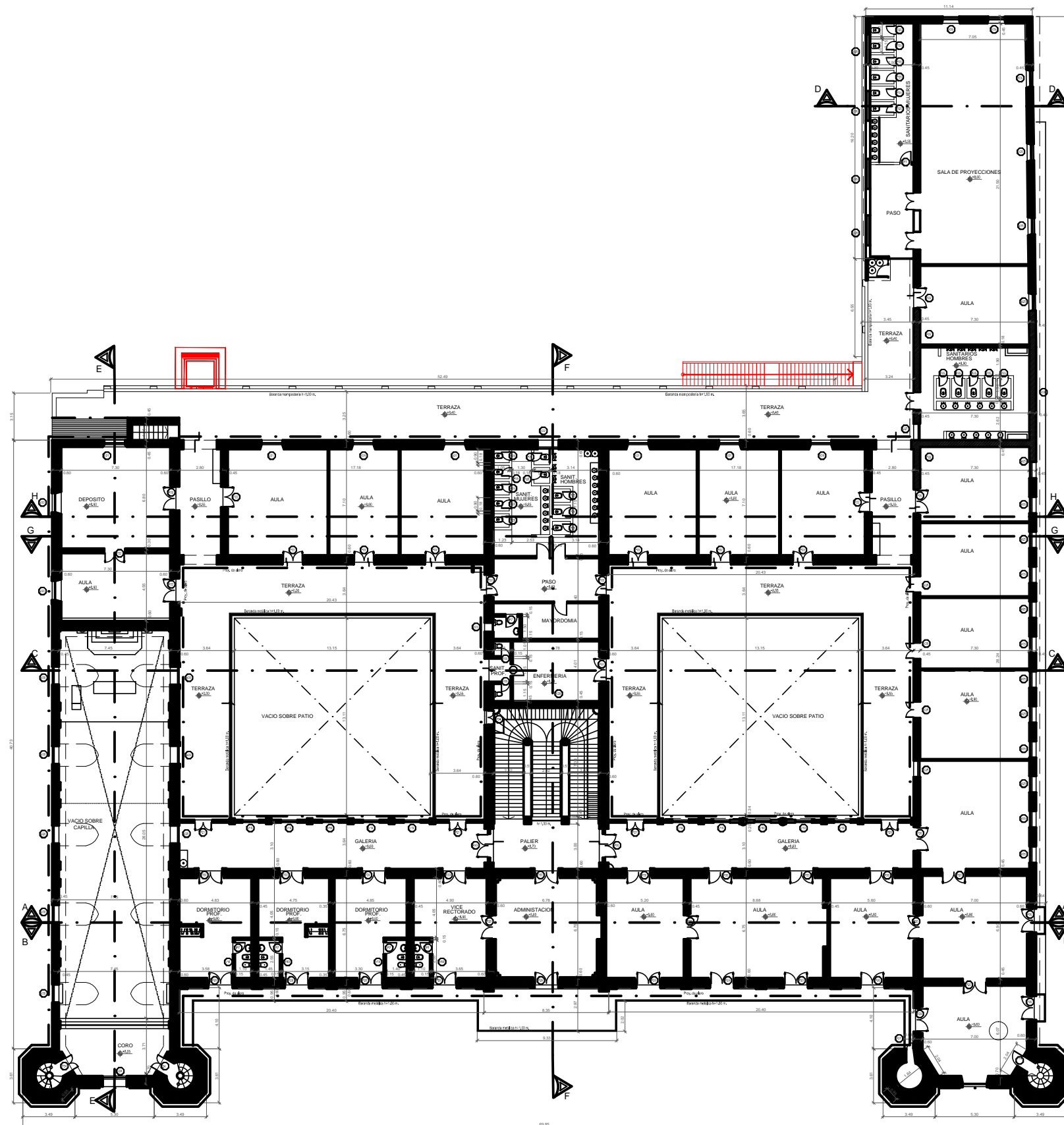
COLEGIO VIRGEN NIÑA

Playa de Estacionamiento

Patio

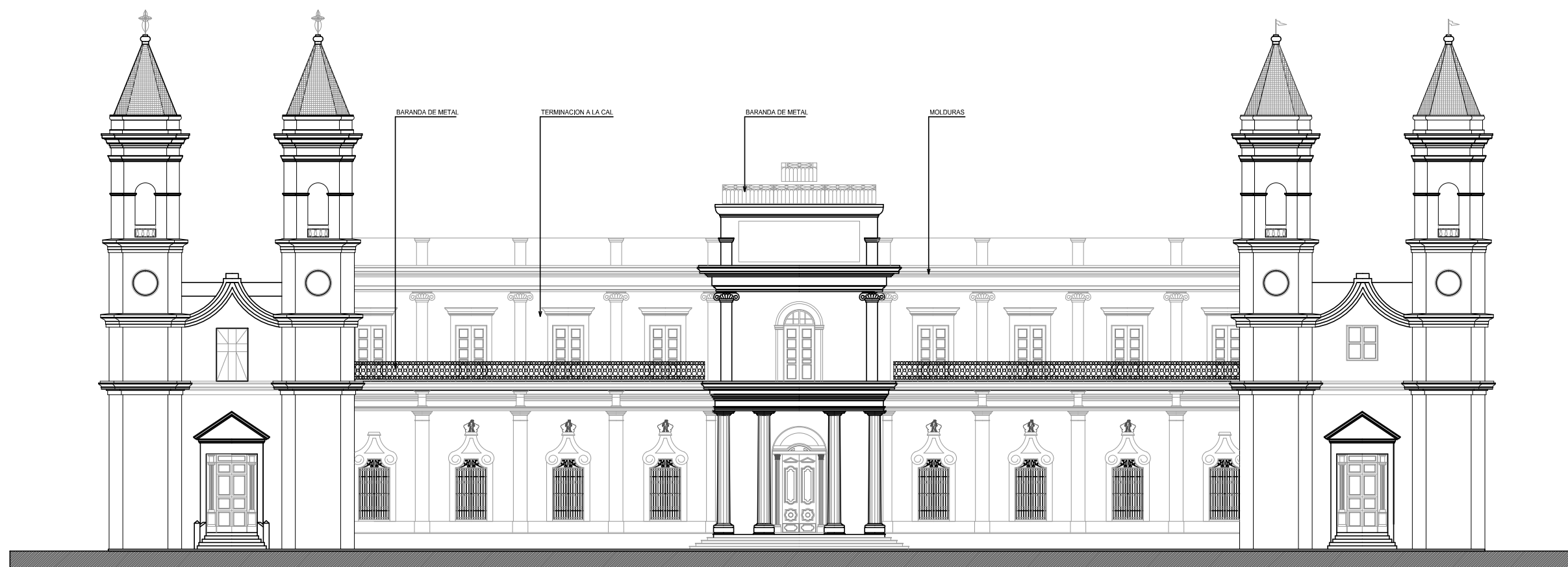
Patio





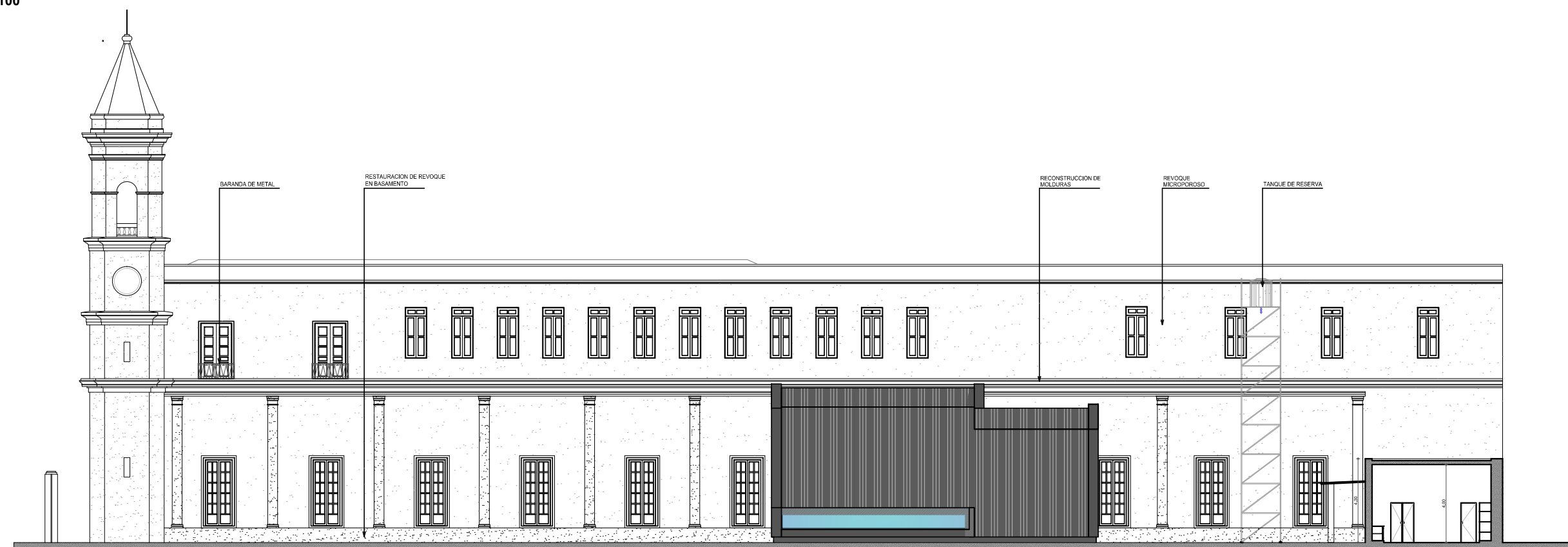
**PLANTA AZOTEA**  
Esc=1:100

**PLANTA ALTA**  
Esc=1:100



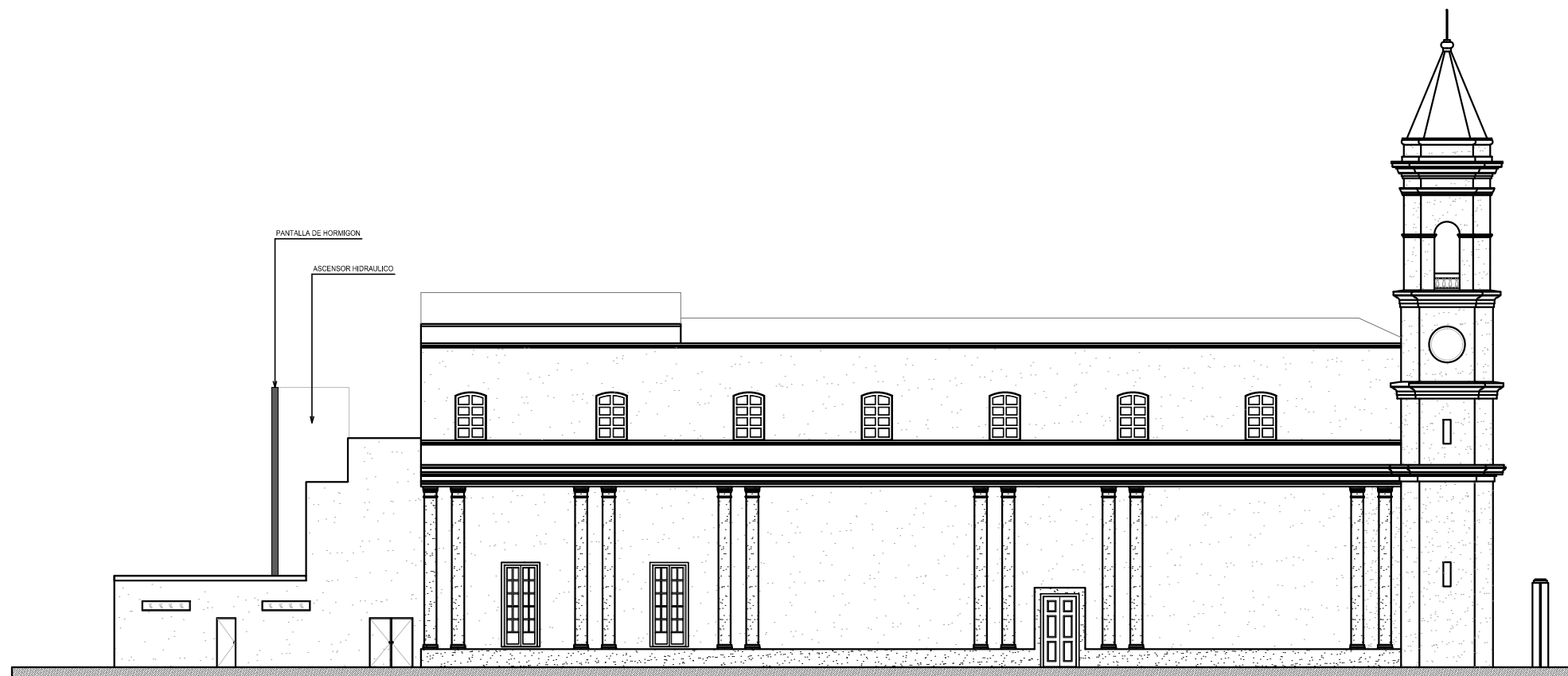
**FACHADA CALLE SAN MARTIN**

Esc=1:100



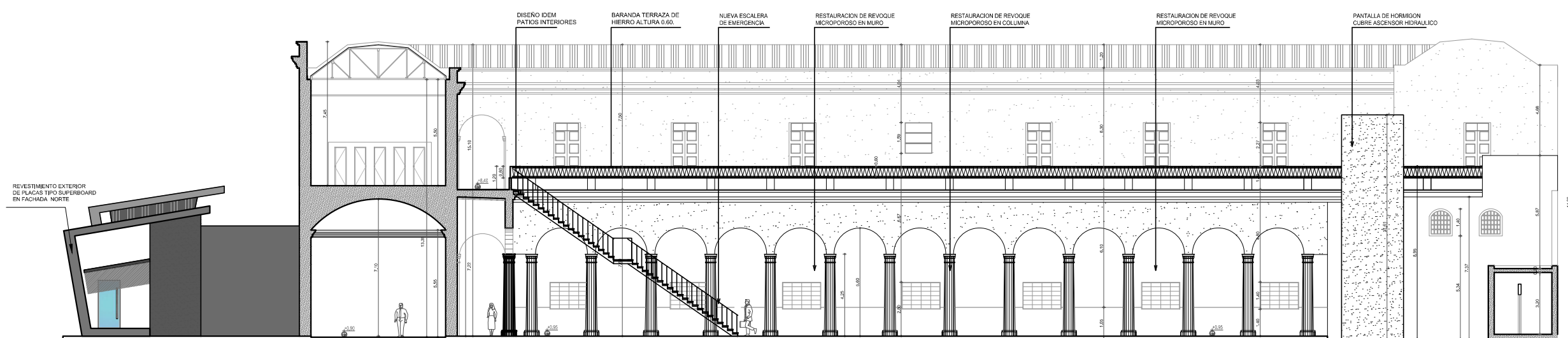
**FACHADA OESTE**

Esc=1:100



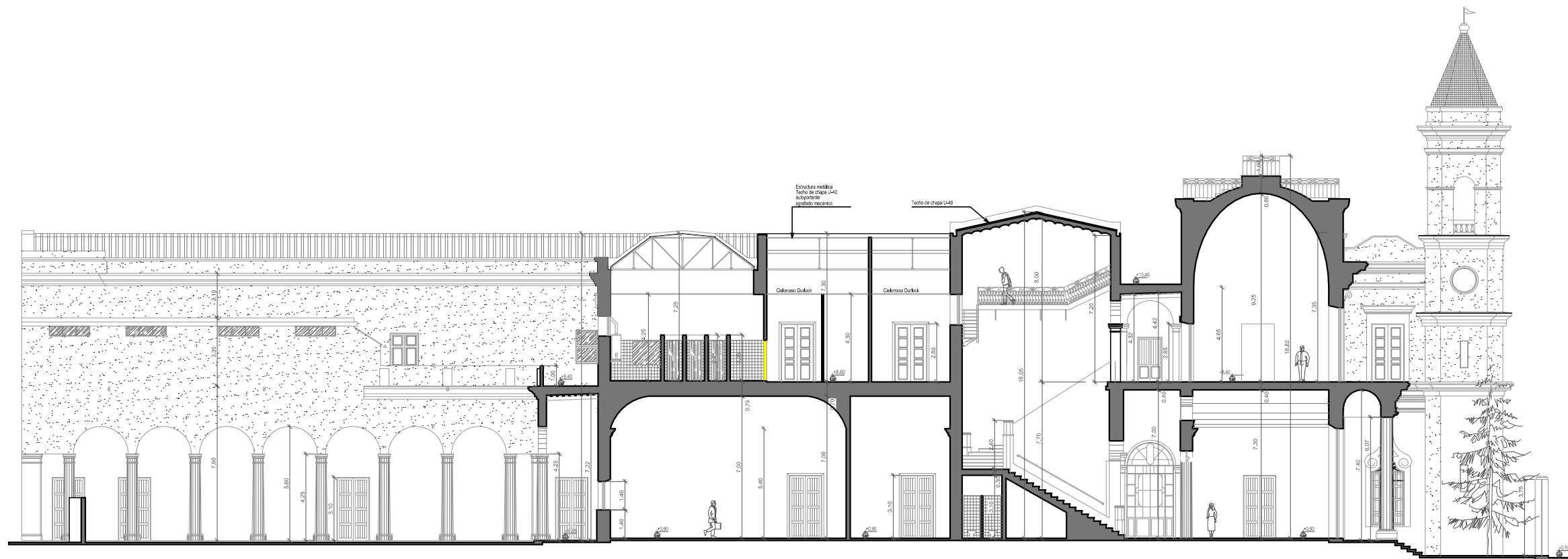
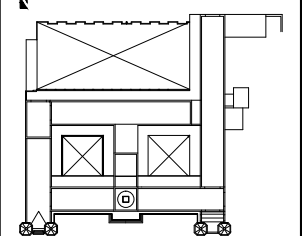
**FACHADA ESTE**

Esc=1:100



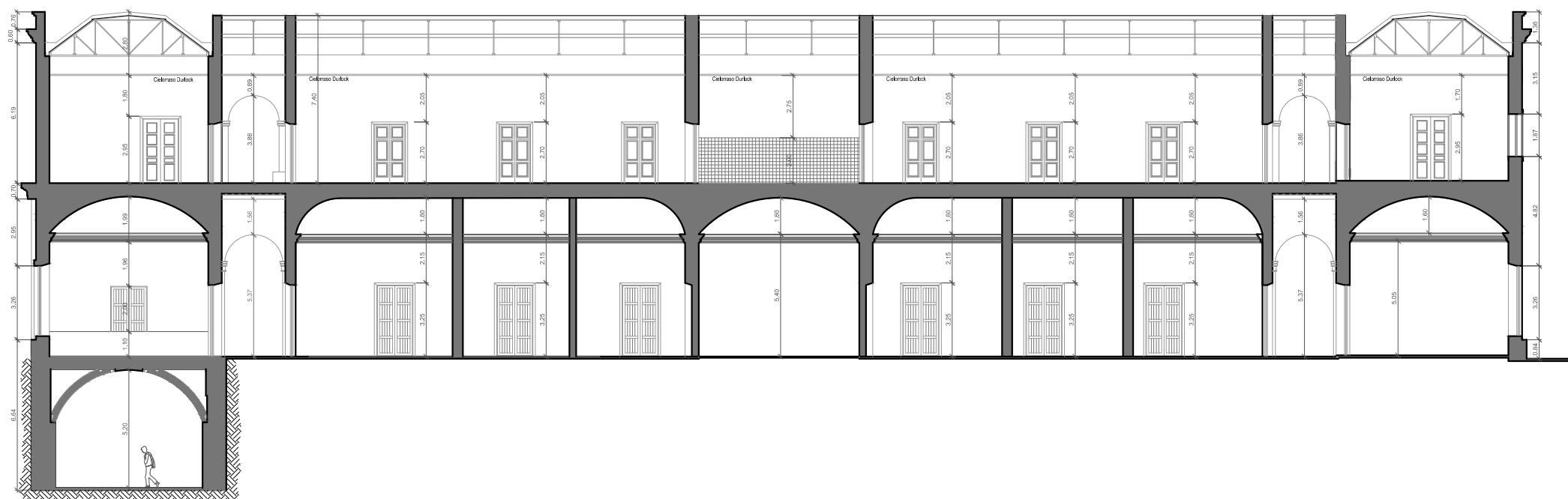
**CORTE**

Esc=1:100



**FACHADA ESTE**

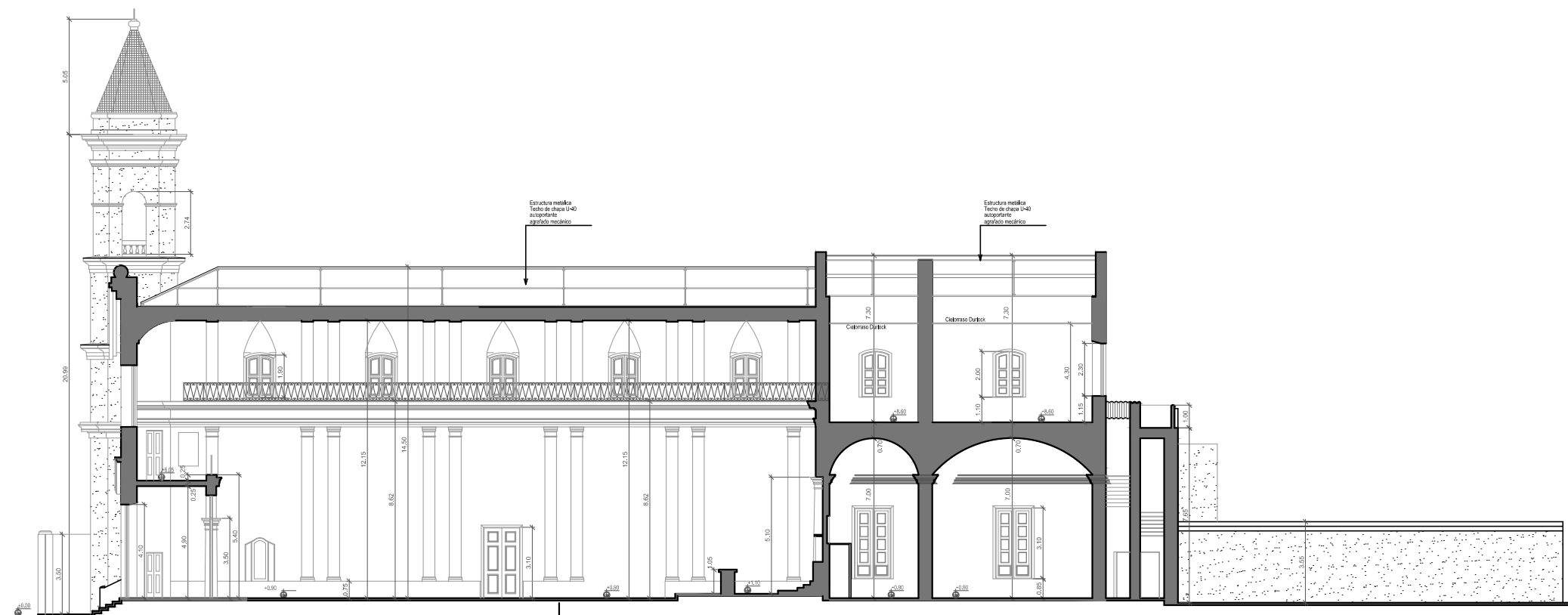
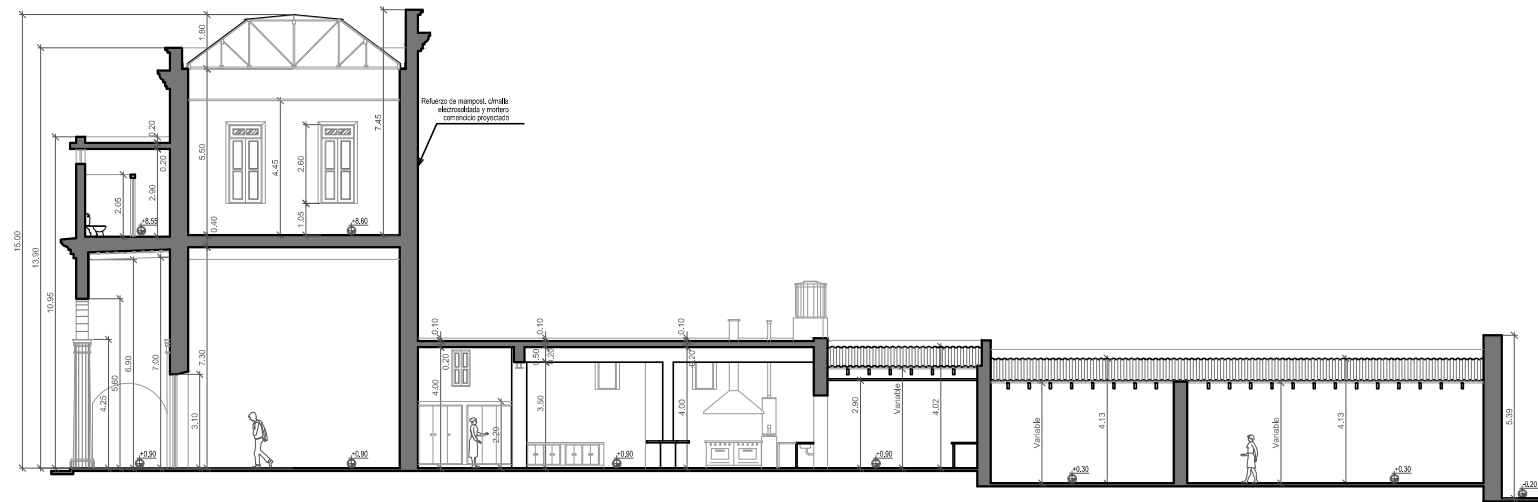
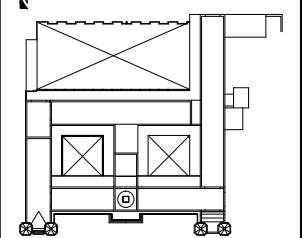
Esc=1:100

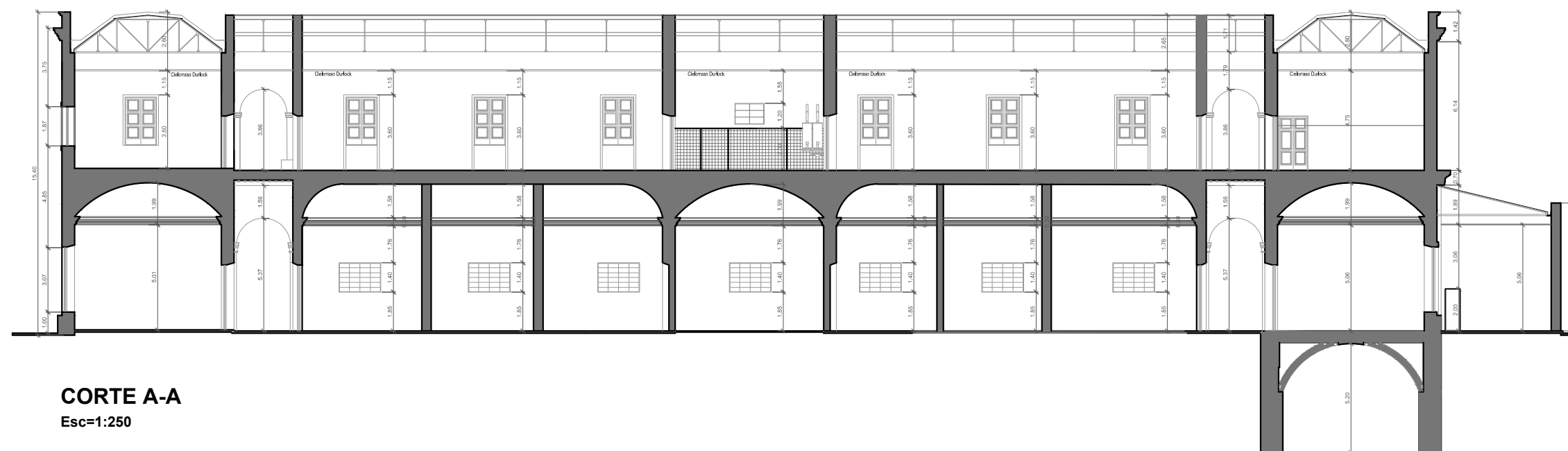


**FACHADA ESTE**

Esc=1:100

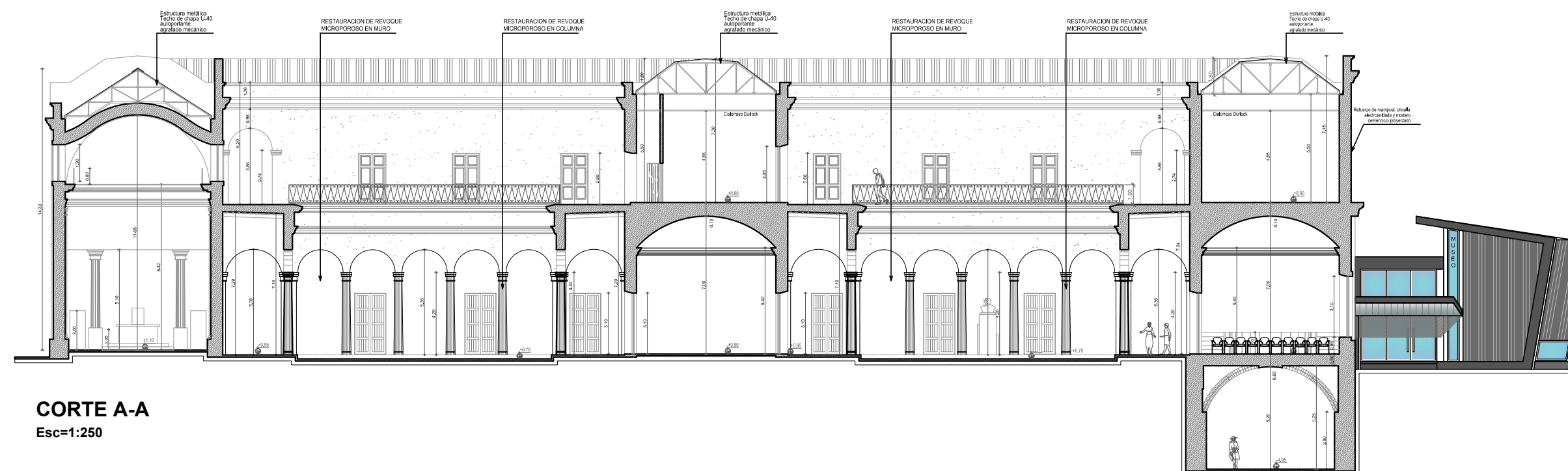






**CORTE A-A**

Esc=1:250



**CORTE A-A**

Esc=1:250