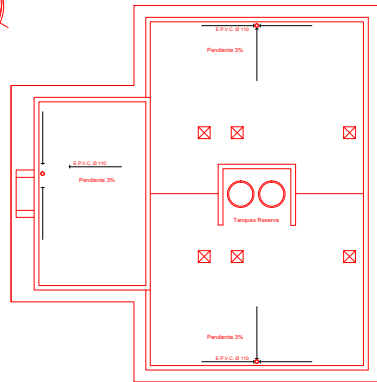


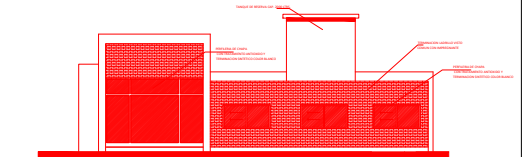
PLANTA GENERAL ESC. 1:100



PLANTA TECHO ESC. 1:100



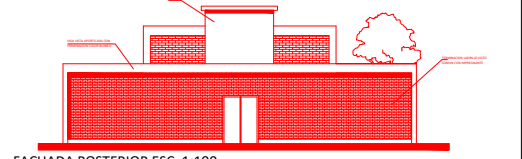
FACHADA ESC. 1:100



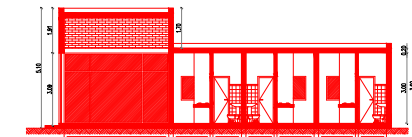
FACHADA LATERAL ESC. 1:100



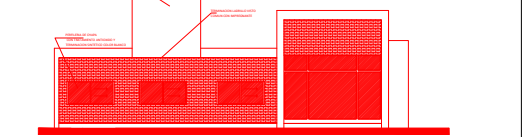
CORTE B-B ESC. 1:100



FACHADA POSTERIOR ESC. 1:100

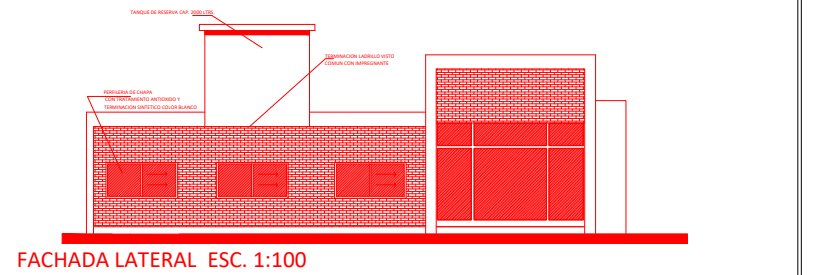
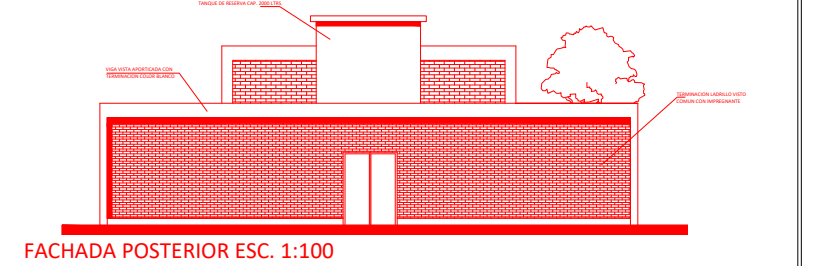
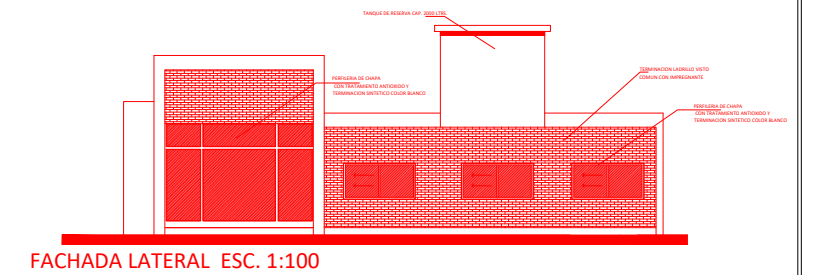
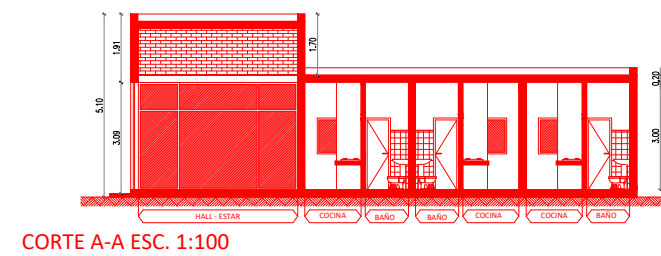
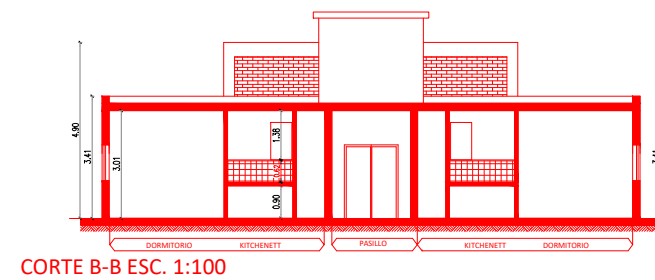
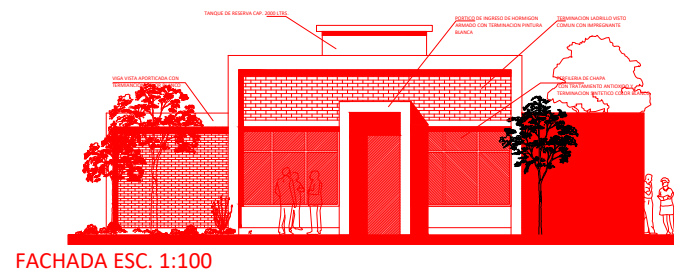
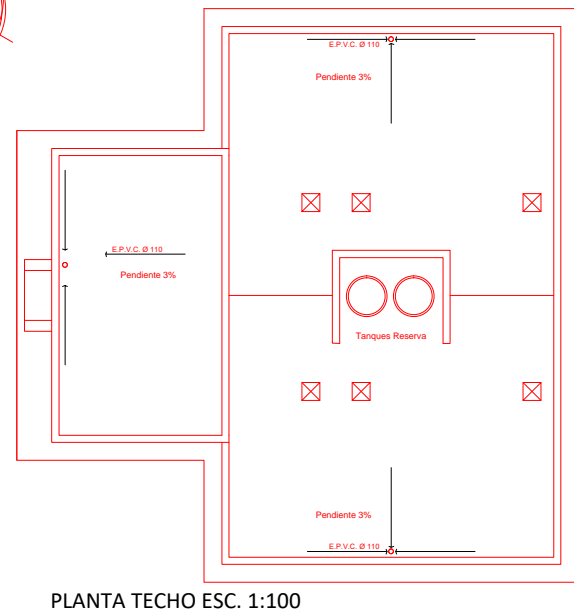
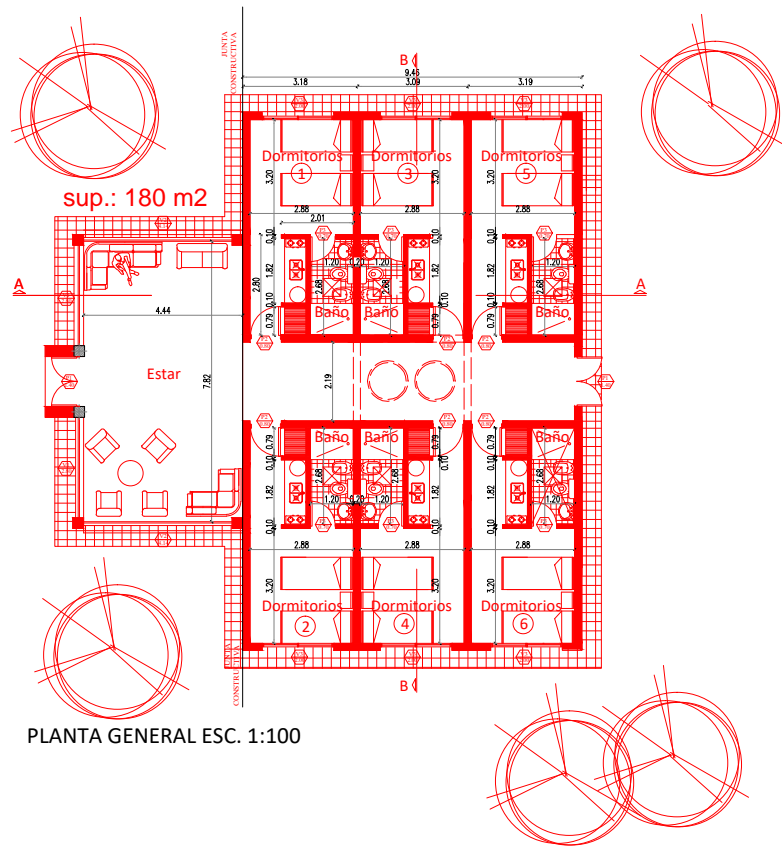


CORTE A-A ESC. 1:100

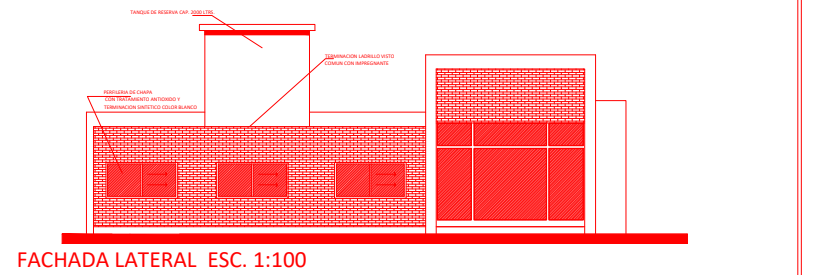
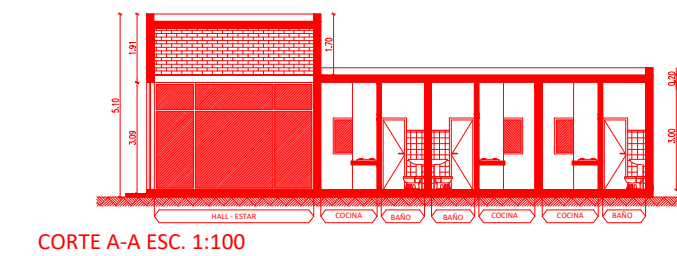
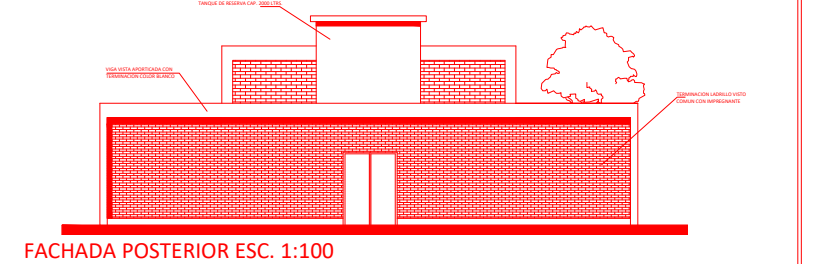
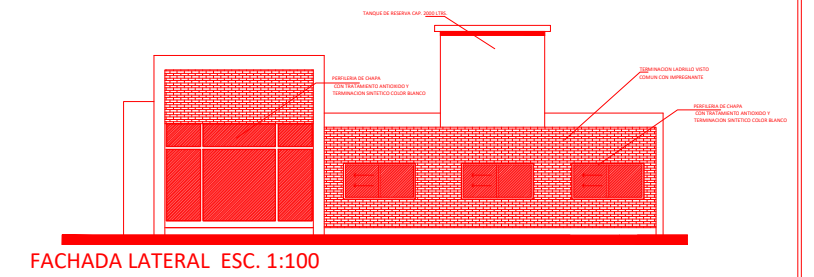
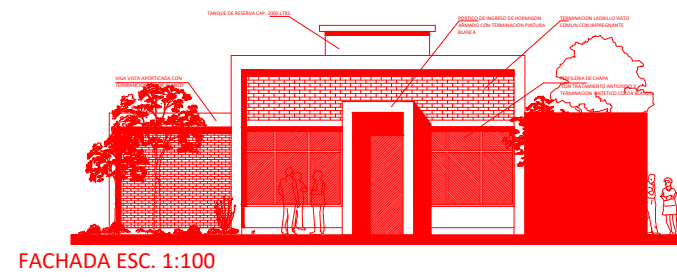
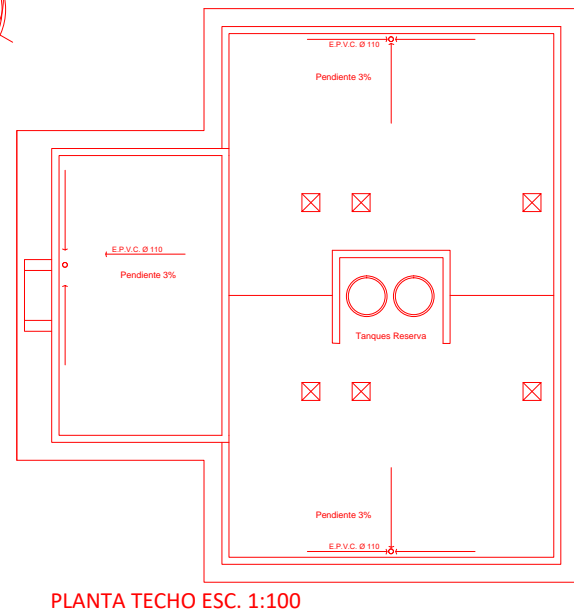
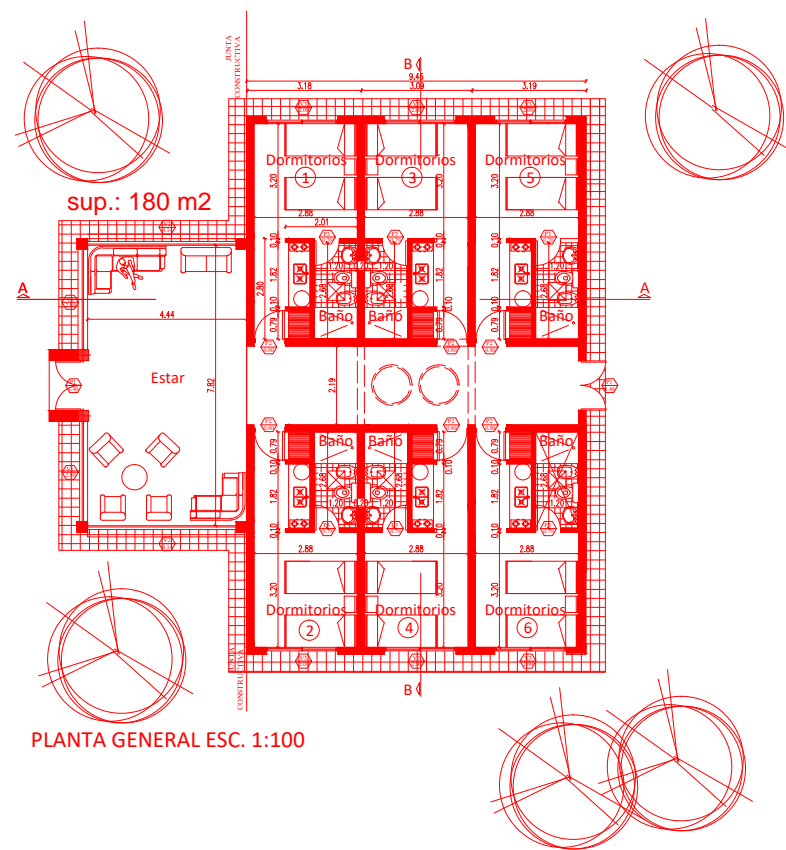


FACHADA LATERAL ESC. 1:100

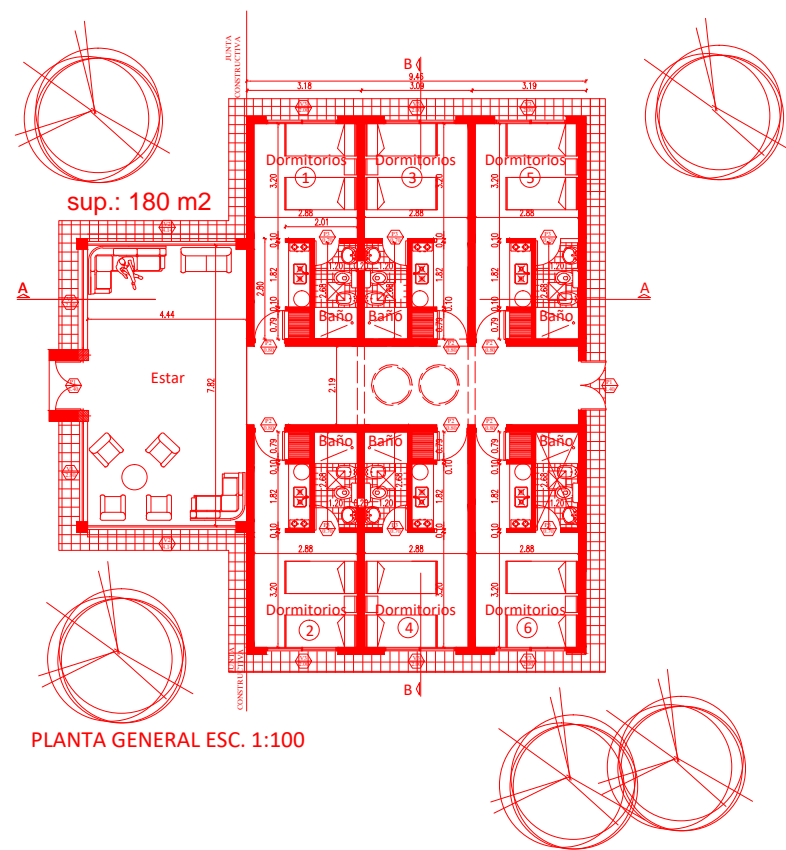
	<b>Proyecto:</b> Ing. José Casanovi	<b>Diseño:</b> Arq. Nicolás Krüger - Arq. Nicolás Casanovi Arq. Ana Virginia - Arq. Fabiana Lorenzini	<b>Fecha:</b> MARZO 2017
	<b>Ubicación:</b> SEDE ARGENTINA	<b>Proyecto:</b> ALBERQUE UNIVERSITARIO PLANO GENERAL	<b>Escala:</b> ESCALA 1:100
			<b>Plano No.:</b> 2



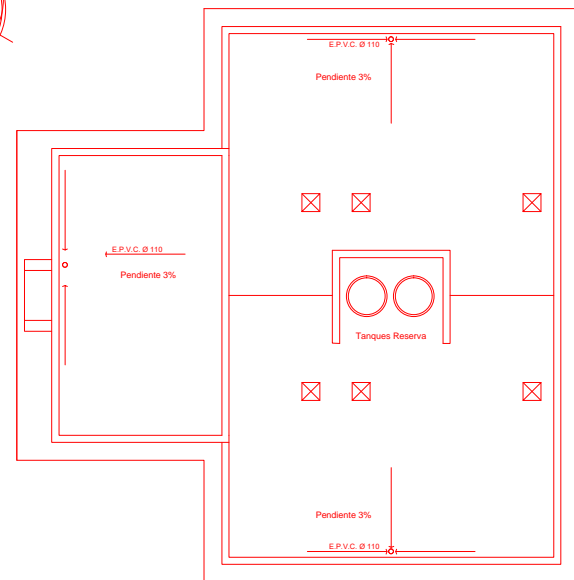
		INSTITUTO VENEZOLANO DE INVESTIGACIONES CIENTÍFICAS Y TECNOLÓGICAS	
Responsable: Ing. José Cossentino	Eppe Ivette Arq. Brizuela Enrique - Arq. Carrizo Evangelina Arq. Asti Virginia - Arq. Fornieri, Leonor	OBRAS: PROYECTO ALBERGUE UNIVERSITARIO PLANO GENERAL	FECHA: MAYO 2017
UBICACIÓN: SEDE VILLA SANTA RITA DE CATUNA		ESCALA 1:100	PLANO N°: 2



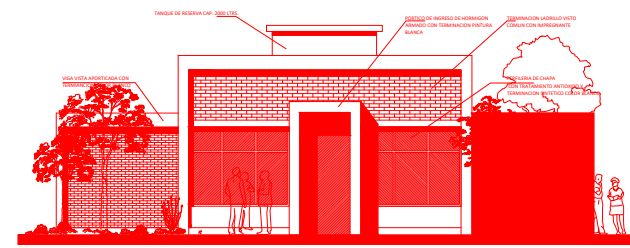
		INSTITUTO DE INVESTIGACIONES Y TRANSFERENCIA TECNOLÓGICA	
Responsable: Ing. José Cosseddu	Equipo Técnico: Arq. Britoño Enrique - Arq. Corfio Evangelina Arq. Asti Virginia - Arq. Fornari, Leonardo	FECHA: MAYO 2017	PLANO N°: 2
OBRA: PROYECTO ALBERGUE UNIVERSITARIO PLANO GENERAL		UBICACION: SEDE CHEPES	
		ESCALA 1:100	



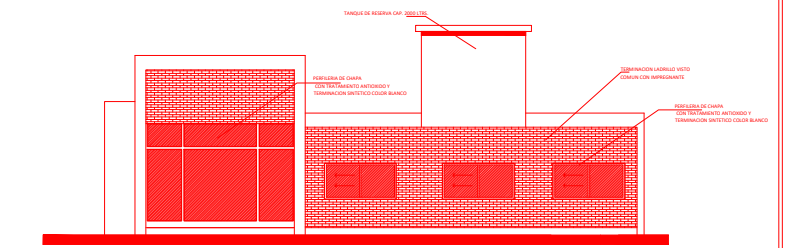
PLANTA GENERAL ESC. 1:100



PLANTA TECHO ESC. 1:100



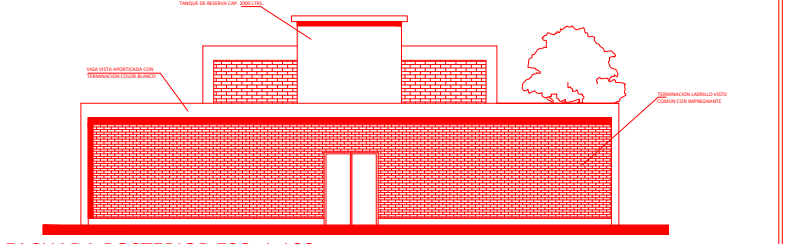
FACHADA ESC. 1:100



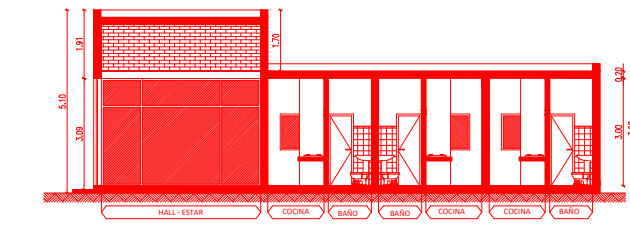
FACHADA LATERAL ESC. 1:100



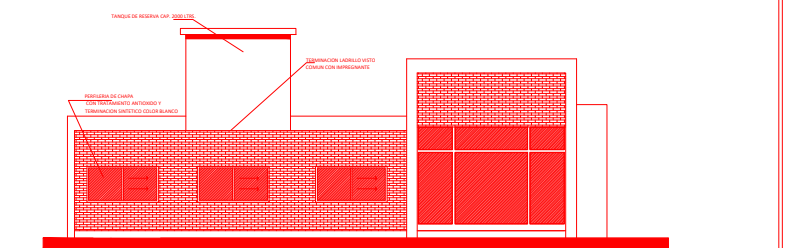
CORTE B-B ESC. 1:100



FACHADA POSTERIOR ESC. 1:100



CORTE A-A ESC. 1:100



FACHADA LATERAL ESC. 1:100

		INSTITUTO DE INVESTIGACIONES Y DESARROLLO TECNOLÓGICO	
Responsable: Ing. José Cosseddu	Equipo Técnico: Arq. Brito Erique - Arq. Corfio Evangelino Arq. Asti Virginia - Arq. Fornier, Leonor	FECHA: MAYO 2017	PLANO N°: 2
OBRA: PROYECTO ALBERGUE UNIVERSITARIO PLANO GENERAL		UBICACION: SEDE VILLA UNION	
		ESCALA 1:100	