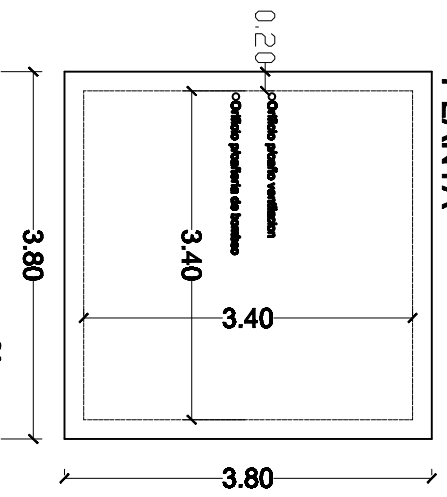
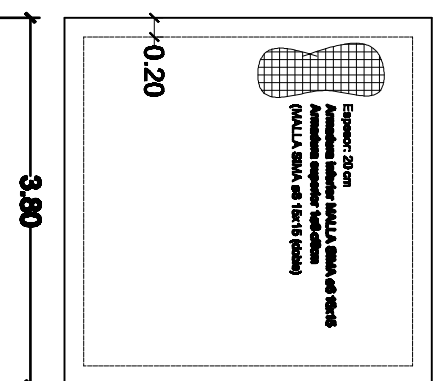


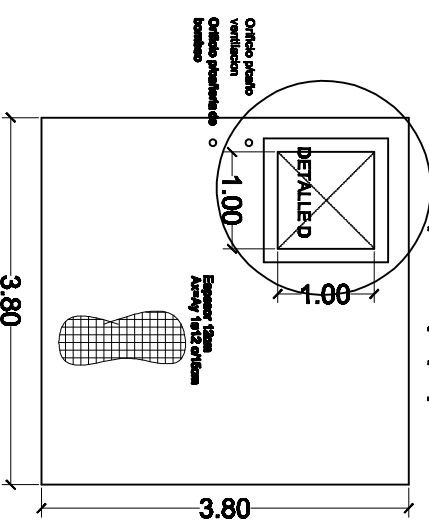
PLANTA



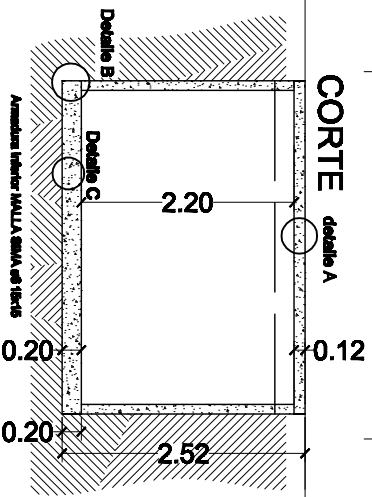
Losas de fondo



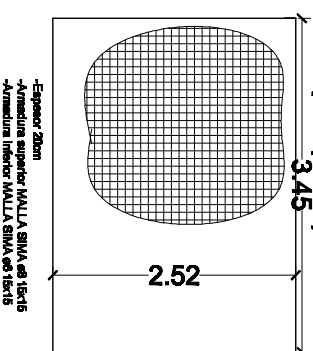
Losas superior (tapa)



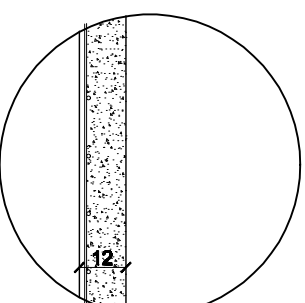
CORTE detalle A



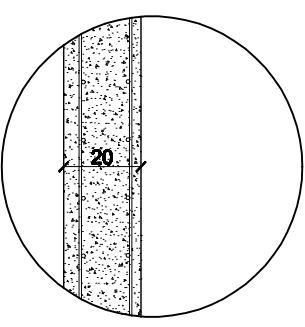
Tabique (vista)



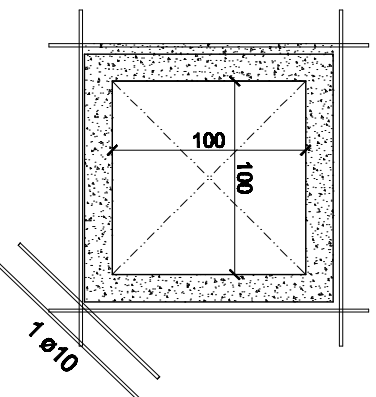
DETALLE A (losa)



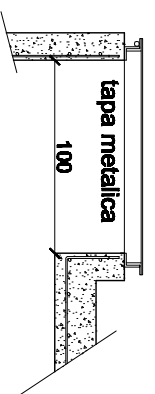
DETALLE C (plata)



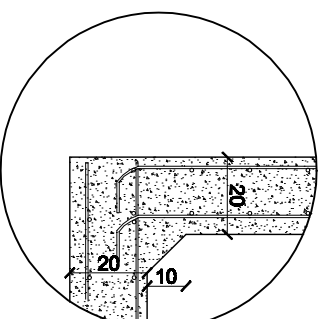
DETALLE D (acceso)



Corte



DETALLE B (tabique/plata)



TABIQUE:
 -Espesor 20cm
 -Arm. interior MALLA SIMA ø8 15x15
 -Arm. exterior MALLA SIMA ø6 15x15

PLATEA
 -Espesor: 20 cm
 -Armadura inferior MALLA SIMA ø6 15x15
 -Armadura superior 1ø8 c/15cm en ambas direcciones